



**CHICO AREA RECREATION AND PARK DISTRICT**  
**545 VALLOMBROSA AVENUE, CHICO, CA 95926**  
**Phone (530) 895-4711 Fax (530) 895-4721**  
**Thursday, January 13, 2022 – 4:00 p.m.**

*Posted Prior to 5:00 pm  
Tuesday, January 11, 2022*

**BOARD MEMBERS:**

Michael McGinnis, Chair  
Thomas Nickell, Vice Chair  
Tom Lando  
Michael Worley  
Dave Donnan

**CARD STAFF:**

Annabel Grimm, General Manager  
Heather Childs, Finance Manager  
Jennifer Marciales, Administrative Manager  
Anjie Goulding, Recreation Manager  
Scott Schumann, Parks and Facilities Manager

**GENERAL INFORMATION:**

1. Agendas:

Agendas are available at the meeting or may be picked up in advance at the CARD Office the day prior to the Board meeting without charge.

2. Agenda Items:

Agenda items are available for public inspection at each meeting or in advance at the CARD Office the day prior to the Board meeting. Copies of agenda items will be available at 20¢ per page.

Notice: if a writing that is a public record pursuant to Government Code Section 54957.5(a) and that relates to an item on this agenda for open session is distributed less than 24 hours prior to this meeting, the writing shall be available for public inspection at the offices of the Chico Area Recreation and Park District, located at 545 Vallombrosa Avenue, Chico, California, at the time the writing is distributed to all or the majority of all of the members of the body.

3. Items Not Appearing On Posted Agenda:

This agenda was posted at least 24 hours in advance of this meeting. For each item not appearing on the posted agenda upon which the Board wishes to take action, it must make one of the following determinations:

- a. Determine by a majority vote that an emergency exists as defined in Government Code 54956.5.
- b. Determine by a two-thirds vote or by a unanimous vote if less than two-thirds of the Board is present, that the need to take action arose subsequent to the agenda being posted.
- c. Determine that the item appeared on a posted agenda for a meeting occurring not more than five calendar days prior to this meeting, and the item was continued to this meeting.

Notwithstanding the above, items may be added to the agenda for Board discussion only or to acknowledge receipt of correspondence or other information.

4. Consent Agenda: All items listed under the Consent Agenda are considered to be routine and will be enacted by one motion. Resolutions will be read by title only. There will be no separate discussion of these items unless members of the Board, or persons in the audience, request specific items to be removed from the Consent Agenda to the Regular Agenda for separate discussion, prior to the time the Board votes on the motion to adopt the Consent Agenda. If any item(s) are removed from the Consent Agenda, the item(s) will be considered at the beginning of the Regular Agenda.

5. Assistance for the Disabled: If you are disabled in any way and need accommodation to participate in the meeting, please contact the CARD Office at (530) 895-4711 at least 48 hours prior to the start of the meeting so the necessary arrangements can be made.

6. Identity of Speakers: Speakers are asked to state their names before speaking and to voluntarily write their names on the provided record.



**SPECIAL MEETING OF THE CHICO AREA  
RECREATION AND PARK DISTRICT BOARD OF DIRECTORS  
Thursday, January 13, 2022 – 4:00 p.m.**

*Posted Prior to 5:00 pm  
Tuesday, January 11, 2022*

**AGENDA**

**1.0 CALL TO ORDER**

1.1 Roll Call

**2.0 Public Comments**

NOTE: The Chico Area Recreation and Park District Board of Directors may take official action only on items included in the posted agenda for a specific scheduled meeting. Items addressed during the Public Comment section are generally matters not included on the agenda and therefore, the Board will not take action at this scheduled meeting. However, such items may be put on the agenda for a future meeting. The public shall have the opportunity to address items that are on the posted agenda.

**3.0 Presentation of Initial Draft Trustee Area Maps**

Representatives of King Consulting will be presenting the Initial Draft Trustee Area Maps to the Board of Directors for review and consideration – *Information/Possible Action*

**4.0 Masking/Testing for District Programs** (Staff Report 22-1) – *Information/Possible Action*

**5.0 Pleasant Valley Pool Maintenance Project** (Staff Report 22-2) - *Action Requested – It is recommended that CARD proceed with the Pleasant Valley pool maintenance project and request the Board of Directors approve the increased scope and budget.*

**6.0 Adjournment**

Adjourn to the Regular Meeting of the Board of Directors of the Chico Area Recreation and Park District on January 27, 2022.

# Trustee Area Creation & Process: Presentation of Initial Map Options

**Chico Area Recreation and Park District**

January 13, 2022

Presented by Rob Murray, King Consulting

# Trustee Area

Creation & Process

# Proposed Timeline

DATE	ACTION
November 15, 2021	Public Outreach Meeting #1
December 2, 2021	Public Outreach Meeting #2
January 13, 2022	Presentation of Draft Trustee Area Maps
January 27, 2022	First Hearing on Draft Trustee Area Maps
February 10, 2022	Second Hearing on Draft Trustee Area Maps
February 24, 2022	Final map options presented to the Board for adoption

# 2020 Census Data

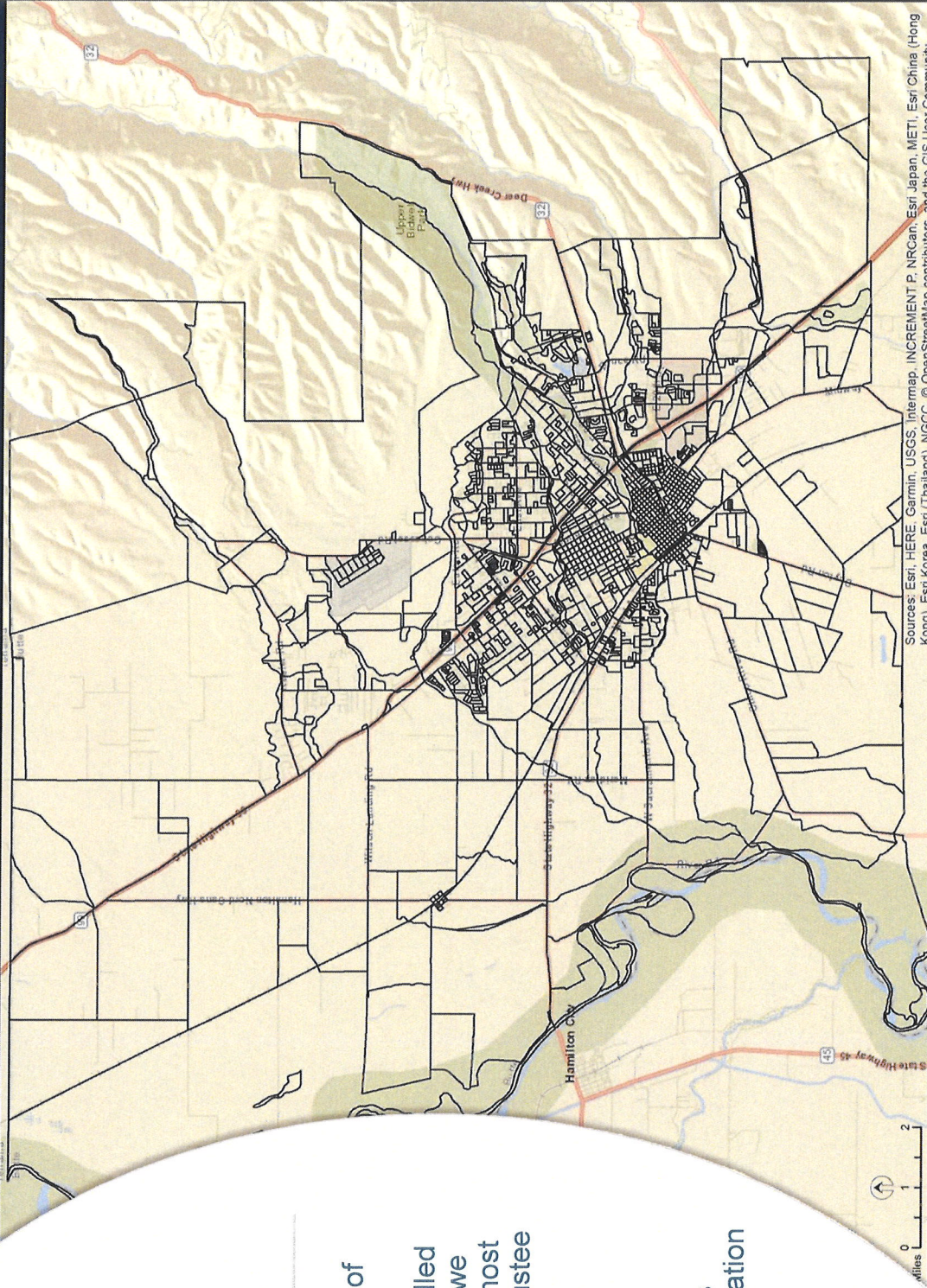
# Summary of 2020 Census Data

Chico Area Recreation and Park District		
CARD	Count	Percentage
Total 2020 Population	117,344	100%
Average Trustee Area Population	23,469	
Minimum Trustee Area Population	22,351	
Maximum Trustee Area Population	24,586	
Total 2020 Population	117,344	100%
White	78,192	66.6%
Hispanic or Latino	23,036	19.6%
Asian	4,791	4.1%
Black or African American	1,979	1.7%
Any Other Race	2,087	1.8%
Two or More Races	7,259	6.2%

# Census Data Background

- Data is available in a variety of geographic levels.
  - The smallest level is called a Census Block, which we will use to provide the most precision in creating Trustee Areas.
- **Census Blocks are not uniform in size or population.**
- CARD contains Census Blocks ranging in population from 0 to 1,411.

## 2020 Census Blocks Chico Area Recreation and Park District





# Initial Draft Trustee Area Maps

# Population Requirements

- Each Trustee Area must be approximately the same size by total 2020 Census population.
- The ideal average population for a Trustee Area is 23,469.
- However, we are allowed leeway that is measured by the variance of each area from the ideal average.
- For example, an area with 23,821 people would have +1.5% variance.
  - $(23,821 - 23,469) / 23,469 = 1.5\%$
- When the variance for all areas is calculated, the **total variance** is the sum of the most positive and most negative variance amounts.
  - *If the smallest area has variance of -4.5% and the largest area has variance of +4.1%, the total variance is 8.6%*
- **The total variance must be less than 10%**

## Blue

### Blue Map Option:

- Uses three Landscaping and Lighting Assessment Districts to help define Trustee Areas.
- Range of Hispanic/Latino population is 15% to 24.4%
- Total population variance is 8.5%.
- One area has no current Board members residing within it.

## Green

### Green Map Option:

- Creates Trustee Areas that correspond with current Board members.
- Range of Hispanic/Latino population is 15.6% to 24.4%
- Total population variance is 8.4%.

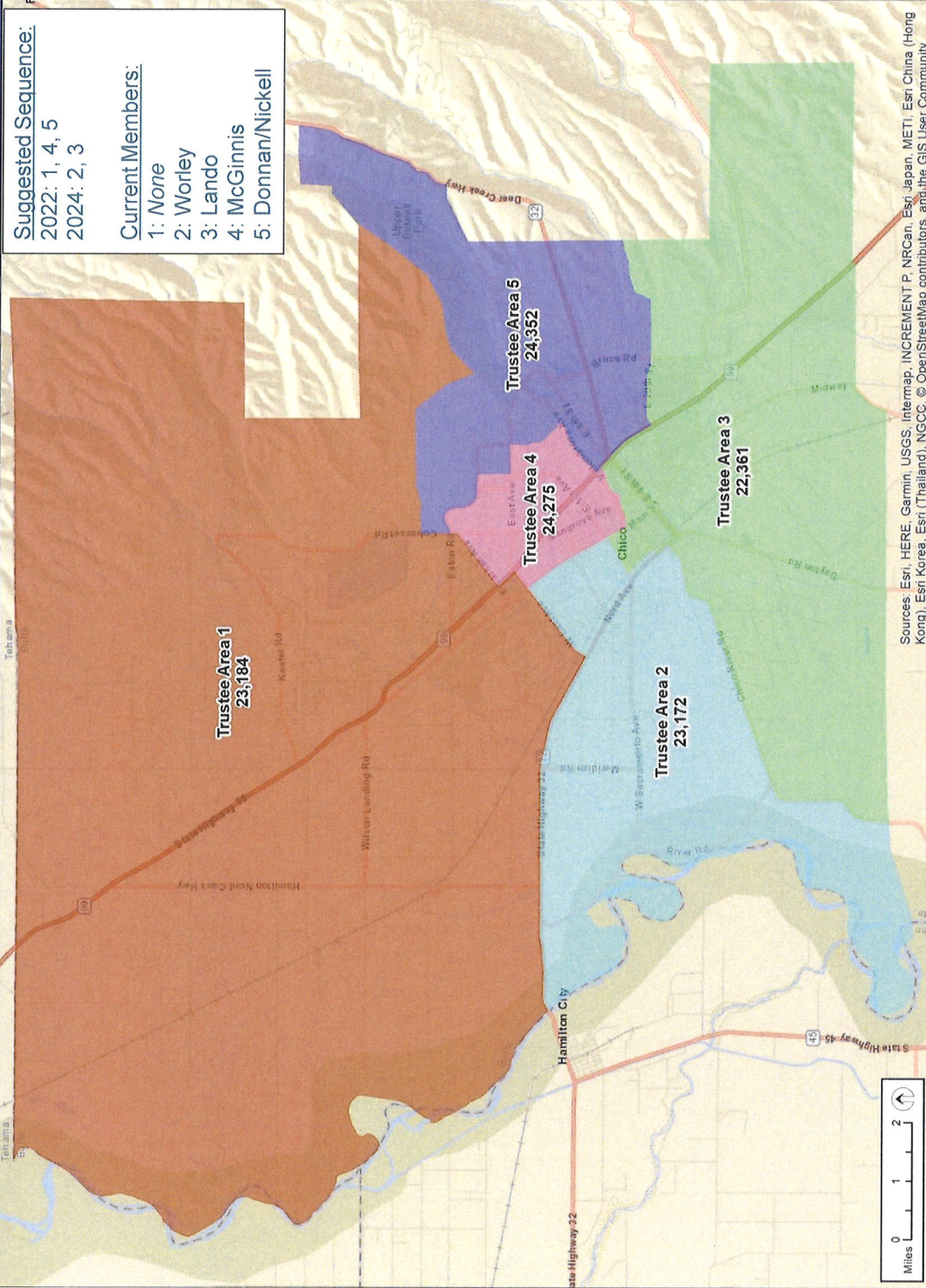
## Purple

### Purple Map Option:

- Uses five Chico neighborhoods to help define Trustee Areas.
- Range of Hispanic/Latino population is 15.5% to 24.4%
- Total population variance is 3.6%.
- One area has no current Board members residing within it.

# Trustee Areas: Blue Map Option

Chico Area Recreation and Park District



**Suggested Sequence:**  
 2022: 1, 4, 5  
 2024: 2, 3

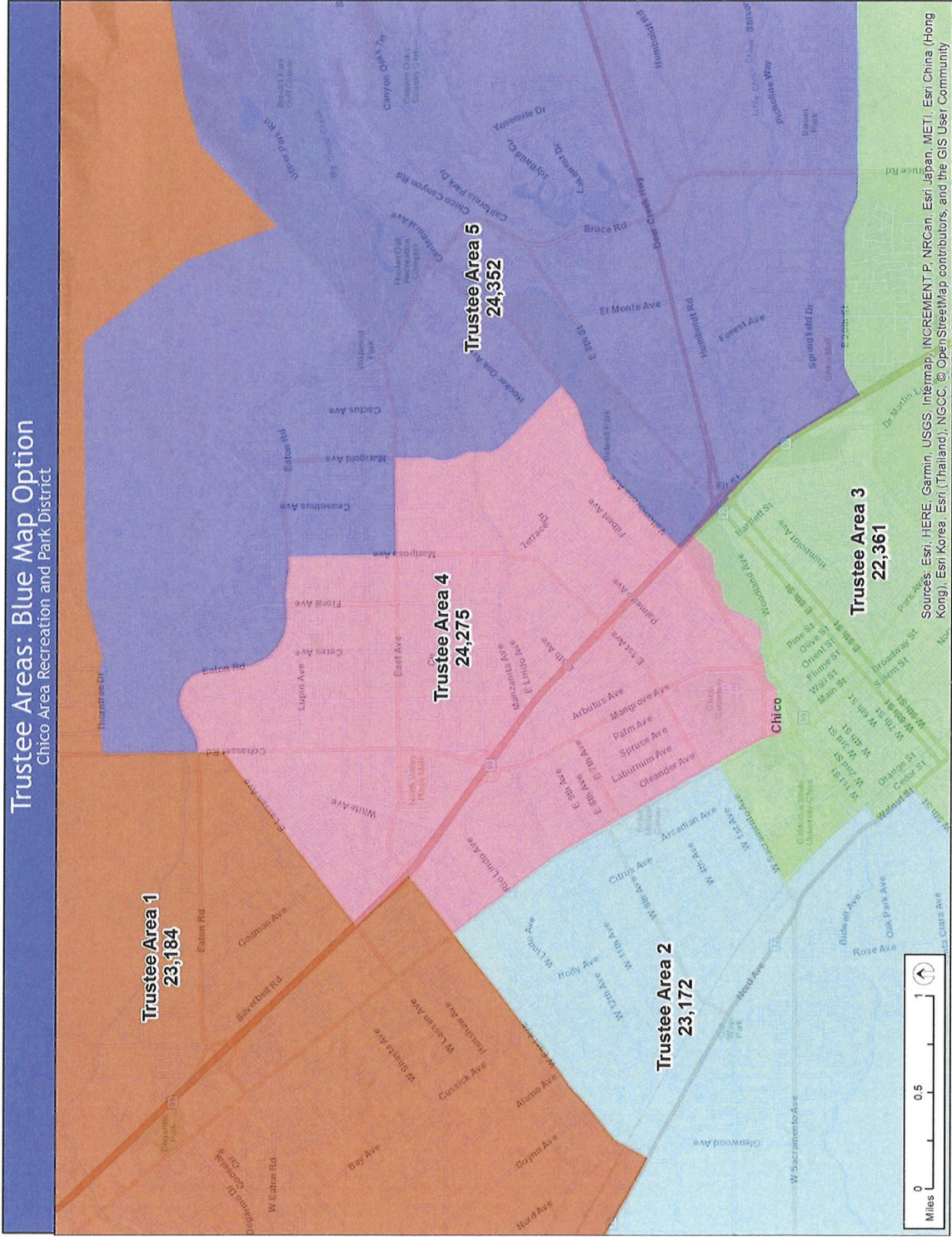
**Current Members:**  
 1: None  
 2: Worley  
 3: Lando  
 4: McGinnis  
 5: Donnan/Nickell

Sources: Esri, HERE, Garmin, USGS, Intermap, INCREMENT P, NRCan, Esri Japan, METI, Esri China (Hong Kong), Esri Korea, Esri (Thailand), NGCC, © OpenStreetMap contributors, and the GIS User Community

Area	Total Population	Variance
1	23,184	-1.2%
2	23,172	-1.3%
3	22,361	-4.7%
4	24,275	3.4%
5	24,352	3.8%
<b>Total</b>	<b>117,344</b>	

Facility	Blue Map
DeGarmo Park	1
Hartley Park	1
Peterson Park	1
Oak Way Park	2
Community Park	3
Dorothy F. Johnson Center	3
Humboldt Avenue Skate Park	3
Rotary Park	3
CARD Community Center	4
Pleasant Valley Rec Center	4
Baroni Park	5
Chico Creek Nature Center	5
Hancock Park	5
Hooker Oak Park	5
Husa Ranch/Nob Hill Park	5
Lakeside Pavilion	5
Wildwood Park	5





### Total Population

Area	Total Population	% Hispanic	% White
1	23,184	18.0%	69.9%
2	23,172	24.4%	60.8%
3	22,361	24.4%	61.0%
4	24,275	16.9%	69.9%
5	24,352	15.0%	71.0%
<b>Total</b>	<b>117,344</b>	<b>19.6%</b>	<b>66.6%</b>

%	Black	All Other	2+ Races
3.5%	1.2%	1.4%	6.0%
4.8%	2.7%	1.5%	5.8%
3.7%	1.7%	2.6%	6.5%
3.2%	1.5%	2.0%	6.5%
5.2%	1.3%	1.3%	6.2%
4.1%	1.7%	1.8%	6.2%

### Voting Age Population

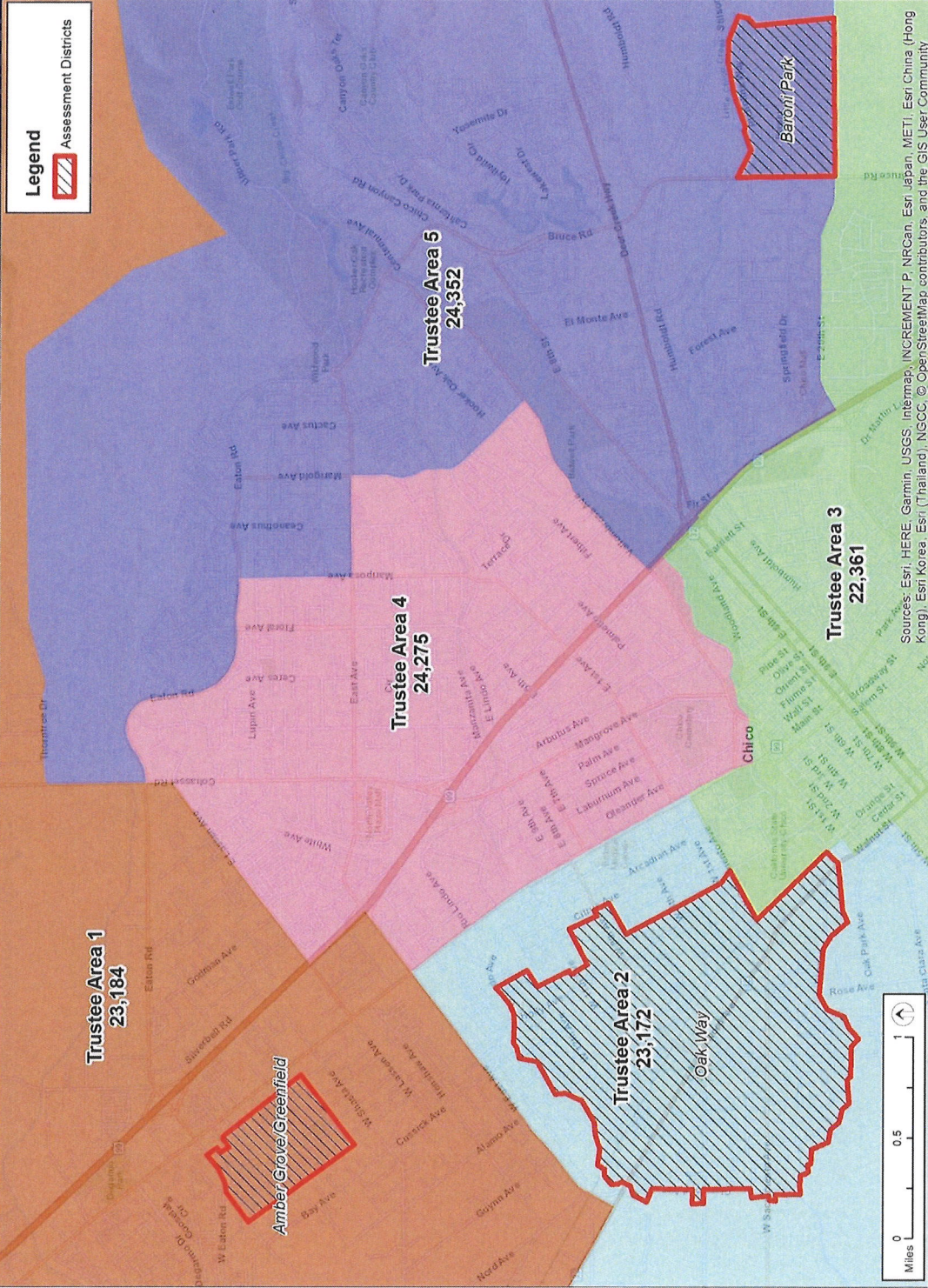
Area	18+ Population	% Hispanic	% White
1	17,966	15.4%	73.3%
2	19,364	23.3%	62.7%
3	18,672	22.5%	63.8%
4	19,527	14.7%	72.9%
5	19,125	13.1%	74.5%
<b>Total</b>	<b>94,654</b>	<b>17.8%</b>	<b>69.4%</b>

%	Black	All Other	2+ Races
3.5%	1.1%	1.5%	5.1%
4.8%	2.7%	1.5%	5.0%
3.7%	1.8%	2.4%	5.9%
3.3%	1.5%	2.0%	5.6%
5.1%	1.3%	1.1%	4.9%
4.1%	1.7%	1.7%	5.3%



## Trustee Areas: Blue Map Option Chico Area Recreation and Park District



## Total Population

Area	Total Population	% Hispanic	% White
1	23,184	18.0%	69.9%
2	23,172	24.4%	60.8%
3	22,361	24.4%	61.0%
4	24,275	16.9%	69.9%
5	24,352	15.0%	71.0%
<b>Total</b>	<b>117,344</b>	<b>19.6%</b>	<b>66.6%</b>
%	Black	All Other	2+ Races
3.5%	1.2%	1.4%	6.0%
4.8%	2.7%	1.5%	5.8%
3.7%	1.7%	2.6%	6.5%
3.2%	1.5%	2.0%	6.5%
5.2%	1.3%	1.3%	6.2%
4.1%	1.7%	1.8%	6.2%

## Voting Age Population

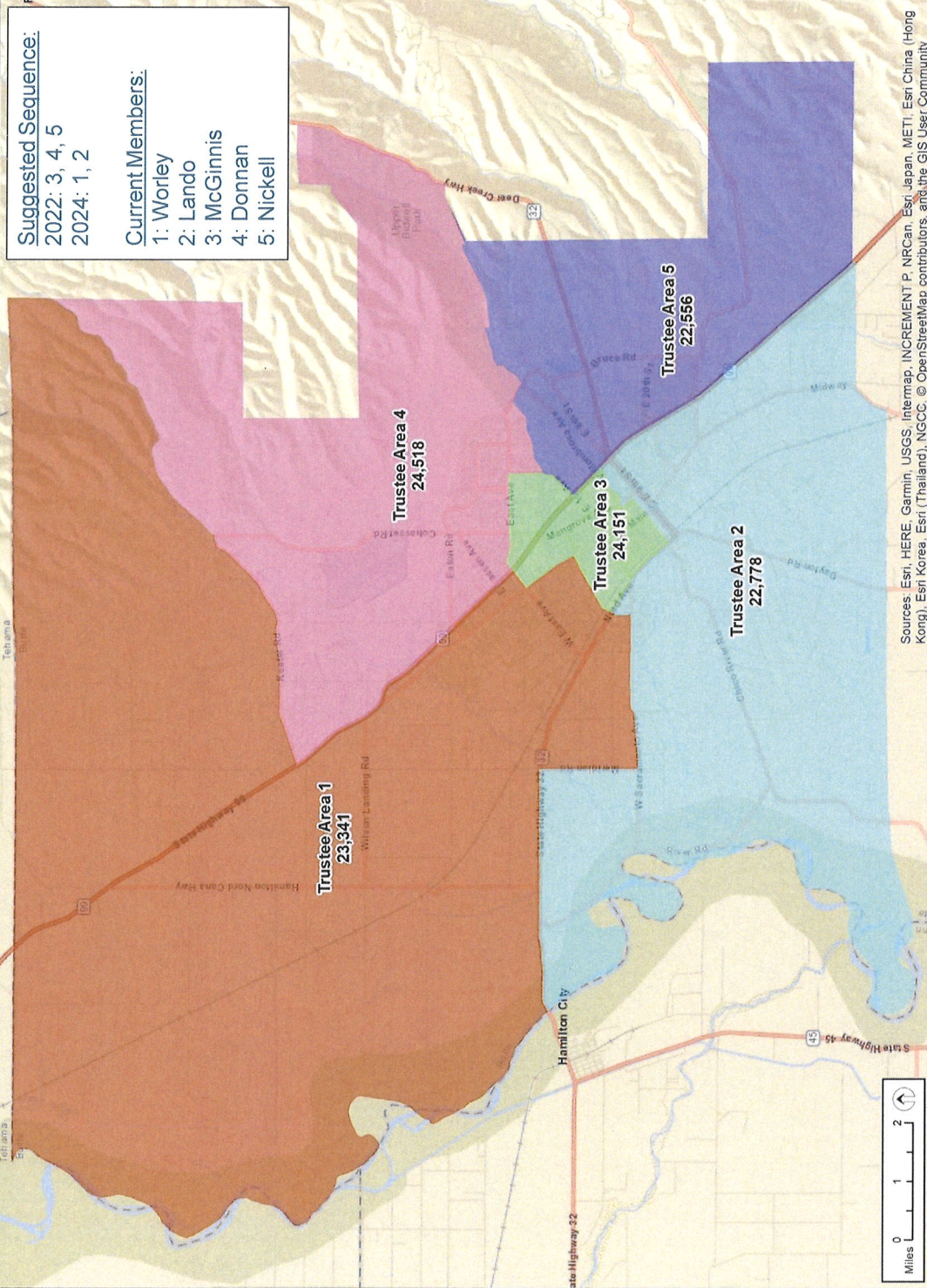
Area	18+ Population	% Hispanic	% White
1	17,966	15.4%	73.3%
2	19,364	23.3%	62.7%
3	18,672	22.5%	63.8%
4	19,527	14.7%	72.9%
5	19,125	13.1%	74.5%
<b>Total</b>	<b>94,654</b>	<b>17.8%</b>	<b>69.4%</b>
%	Black	All Other	2+ Races
3.5%	1.1%	1.5%	5.1%
4.8%	2.7%	1.5%	5.0%
3.7%	1.8%	2.4%	5.9%
3.3%	1.5%	2.0%	5.6%
5.1%	1.3%	1.1%	4.9%
4.1%	1.7%	1.7%	5.3%



Sources: Esri, HERE, Garmin, USGS, Intermap, INCREMENT P, NRCan, Esri Japan, METI, Esri China (Hong Kong), Esri Korea, Esri (Thailand), NGCC, © OpenStreetMap contributors, and the GIS User Community

# Trustee Areas: Green Map Option

Chico Area Recreation and Park District



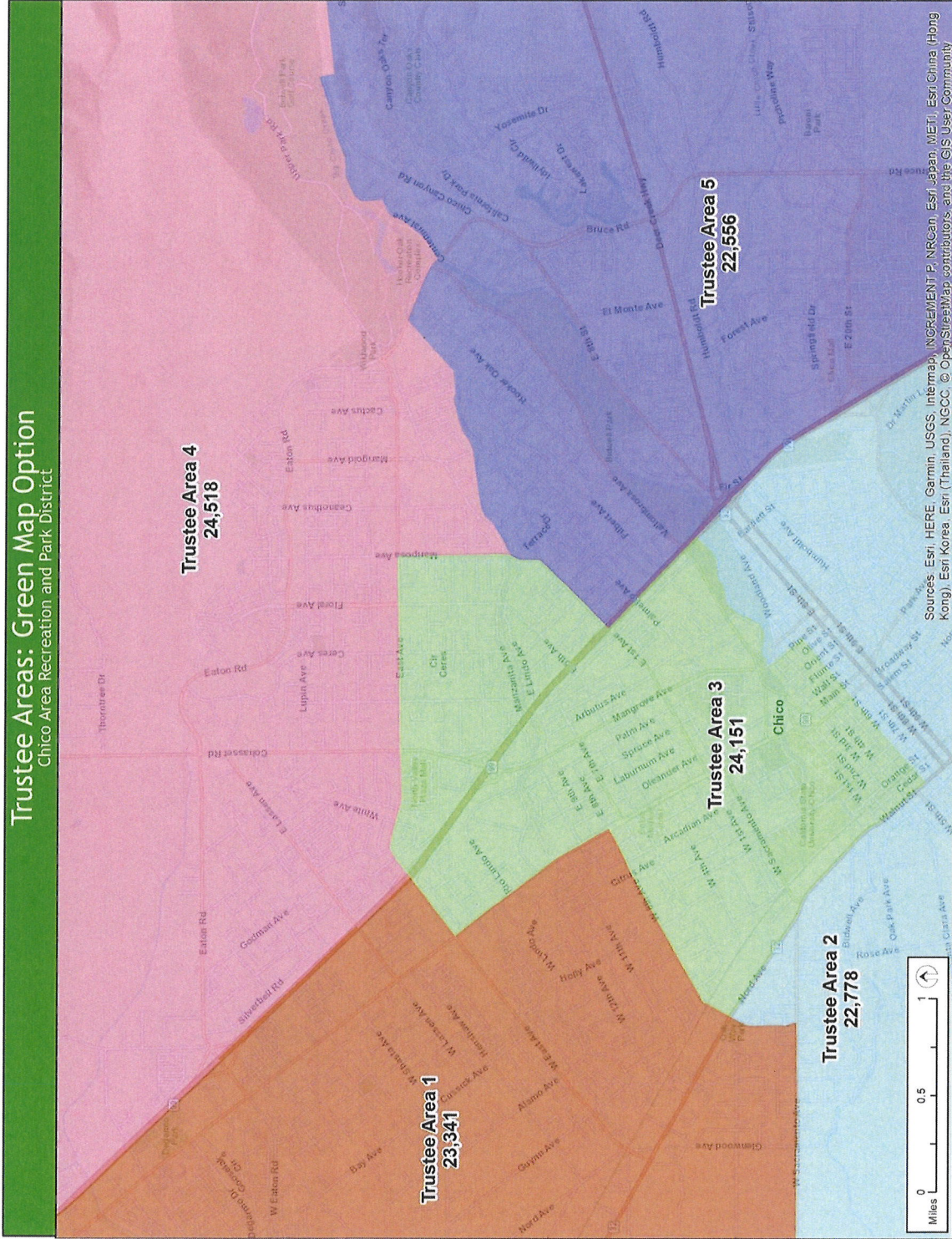
Area	Total Population	Variance
1	23,341	-0.5%
2	22,778	-2.9%
3	24,151	2.9%
4	24,518	4.5%
5	22,556	-3.9%
<b>Total</b>	<b>117,344</b>	

Facility	Green Map
DeGarmo Park	1
Hartley Park	1
Oak Way Park	1
Peterson Park	1
Community Park	2
Dorothy F. Johnson Center	2
Humboldt Avenue Skate Park	2
Rotary Park	2
CARD Community Center	3
Pleasant Valley Rec Center	3
Hancock Park	4
Hooker Oak Park	4
Wildwood Park	4
Baroni Park	5
Chico Creek Nature Center	5
Husa Ranch/Nob Hill Park	5
Lakeside Pavilion	5



## Trustee Areas: Green Map Option

Chico Area Recreation and Park District



Sources: Esri, HERE, Garmin, USGS, Intermap, INCREMENT P, NRCan, Esri Japan, METI, Esri China (Hong Kong), Esri Korea, Esri (Thailand), NGCC © OpenStreetMap contributors, and the GIS User Community

## Total Population

Area	Total Population	% Hispanic	% White	
1	23,341	18.7%	68.4%	
2	22,778	24.4%	61.6%	
3	24,151	22.7%	62.3%	
4	24,518	16.9%	69.9%	
5	22,556	15.6%	71.0%	
<b>Total</b>	<b>117,344</b>	<b>19.6%</b>	<b>66.6%</b>	
Area	% Asian	% Black	% All Other	% 2+ Races
1	3.8%	1.4%	1.5%	6.3%
2	3.6%	2.0%	2.3%	6.1%
3	4.5%	2.4%	1.8%	6.2%
4	4.2%	1.3%	1.7%	6.1%
5	4.3%	1.4%	1.6%	6.2%
<b>Total</b>	<b>4.1%</b>	<b>1.7%</b>	<b>1.8%</b>	<b>6.2%</b>

## Voting Age Population

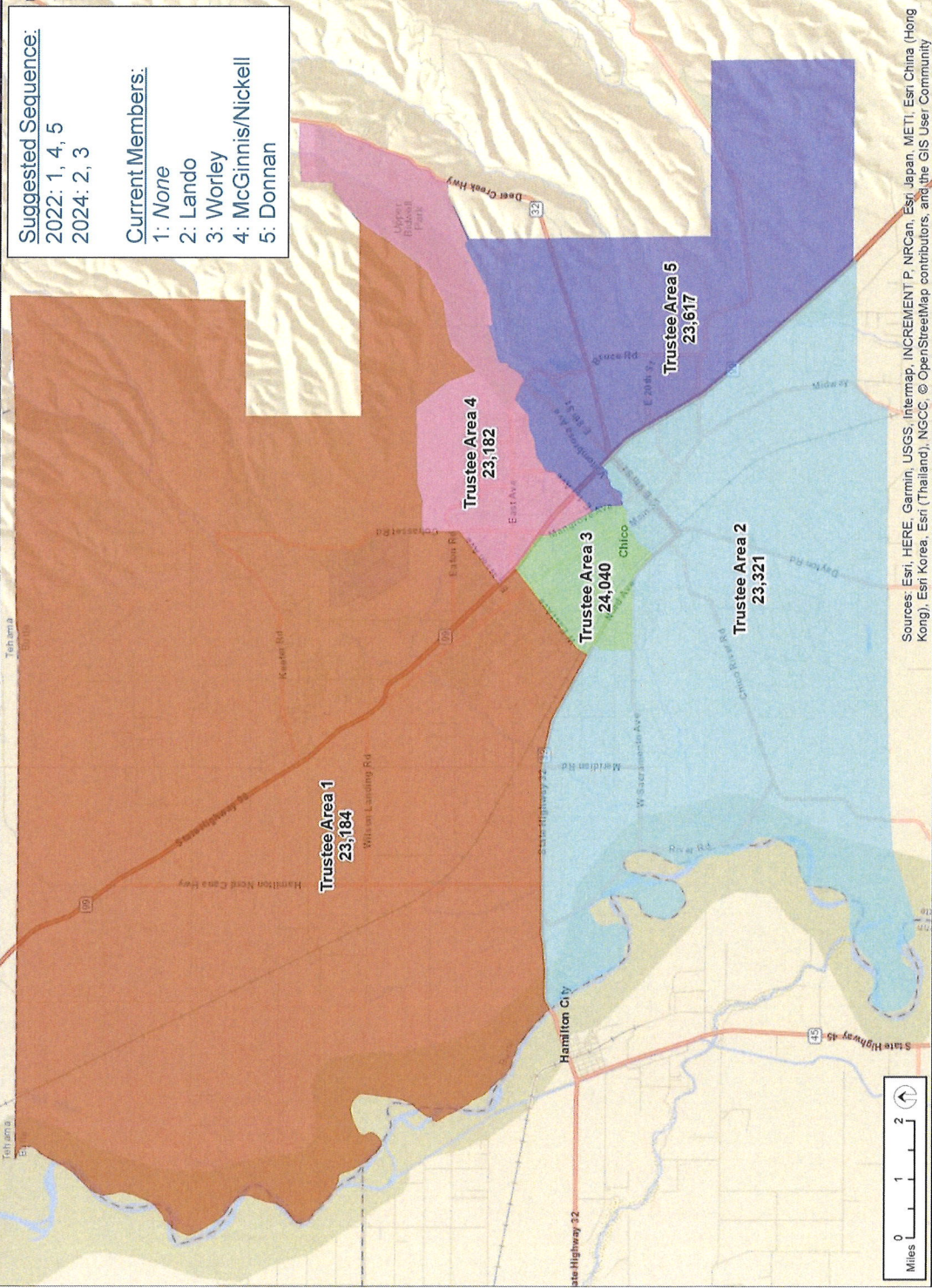
Area	18+ Population	% Hispanic	% White	
1	18,049	16.0%	72.1%	
2	19,127	22.6%	64.1%	
3	20,493	21.4%	64.4%	
4	19,093	14.6%	73.5%	
5	17,892	13.9%	74.0%	
<b>Total</b>	<b>94,654</b>	<b>17.8%</b>	<b>69.4%</b>	
Area	% Asian	% Black	% All Other	% 2+ Races
1	3.9%	1.3%	1.6%	5.3%
2	3.6%	2.1%	2.1%	5.5%
3	4.5%	2.4%	1.7%	5.5%
4	4.0%	1.2%	1.6%	5.2%
5	4.4%	1.4%	1.4%	5.0%
<b>Total</b>	<b>4.1%</b>	<b>1.7%</b>	<b>1.7%</b>	<b>5.3%</b>





# Trustee Areas: Purple Map Option

Chico Area Recreation and Park District



**Suggested Sequence:**  
 2022: 1, 4, 5  
 2024: 2, 3

**Current Members:**  
 1: None  
 2: Lando  
 3: Worley  
 4: McGinnis/Nickell  
 5: Donnan

Area	Total Population	Variance
1	23,184	-1.2%
2	23,321	-0.6%
3	24,040	2.4%
4	23,182	-1.2%
5	23,617	0.6%
<b>Total</b>	<b>117,344</b>	

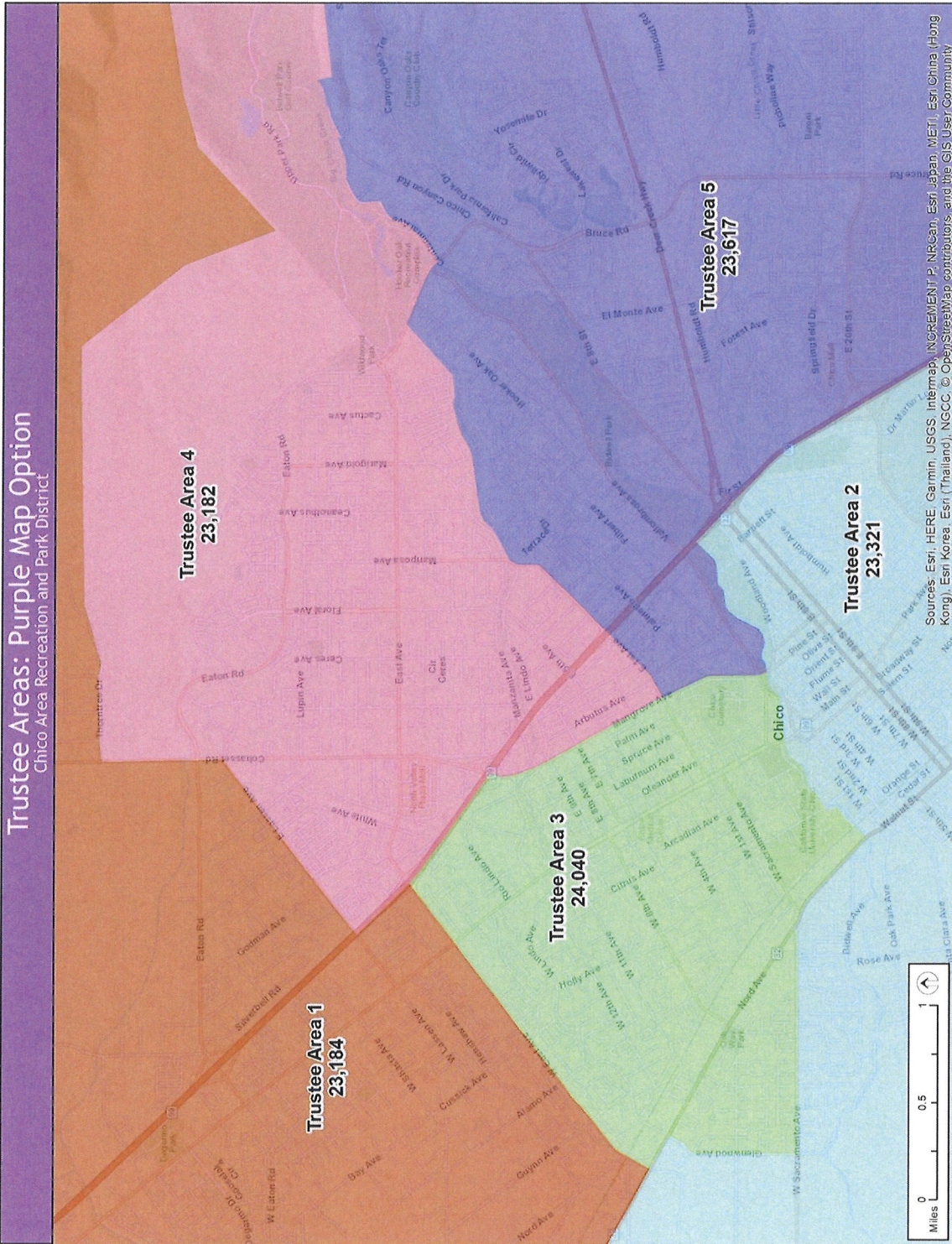
Facility	Purple Map
DeGarmo Park	1
Hartley Park	1
Peterson Park	1
Community Park	2
Dorothy F. Johnson Center	2
Humboldt Avenue Skate Park	2
Rotary Park	2
Oak Way Park	3
Hancock Park	4
Hooker Oak Park	4
Pleasant Valley Rec Center	4
Wildwood Park	4
Baroni Park	5
CARD Community Center	5
Chico Creek Nature Center	5
Husa Ranch/Nob Hill Park	5
Lakeside Pavilion	5

Sources: Esri, HERE, Garmin, USGS, Intermap, INCREMENT P, NRCan, Esri, Japan, METI, Esri, China (Hong Kong), Esri Korea, Esri (Thailand), NGCC, © OpenStreetMap contributors, and the GIS User Community



## Trustee Areas: Purple Map Option

Chico Area Recreation and Park District



Sources: Esri, HERE, Garmin, USGS, Intermap, INCREMENT P, NRCan, Esri Japan, METI, Esri China (Hong Kong), Esri Korea, Esri (Thailand), NGCC, © OpenStreetMap contributors, and the GIS User Community

## Total Population

Area	Total Population	% Hispanic	% White
1	23,184	18.0%	69.9%
2	23,321	22.9%	63.0%
3	24,040	24.4%	61.0%
4	23,182	17.3%	68.3%
5	23,617	15.5%	71.2%
<b>Total</b>	<b>117,344</b>	<b>19.6%</b>	<b>66.6%</b>

% Asian	% Black	% All Other	% 2+ Races
3.5%	1.2%	1.4%	6.0%
3.5%	2.0%	2.4%	6.3%
4.6%	2.4%	1.5%	6.2%
4.6%	1.5%	1.9%	6.4%
4.2%	1.4%	1.6%	6.2%
4.1%	1.7%	1.8%	6.2%

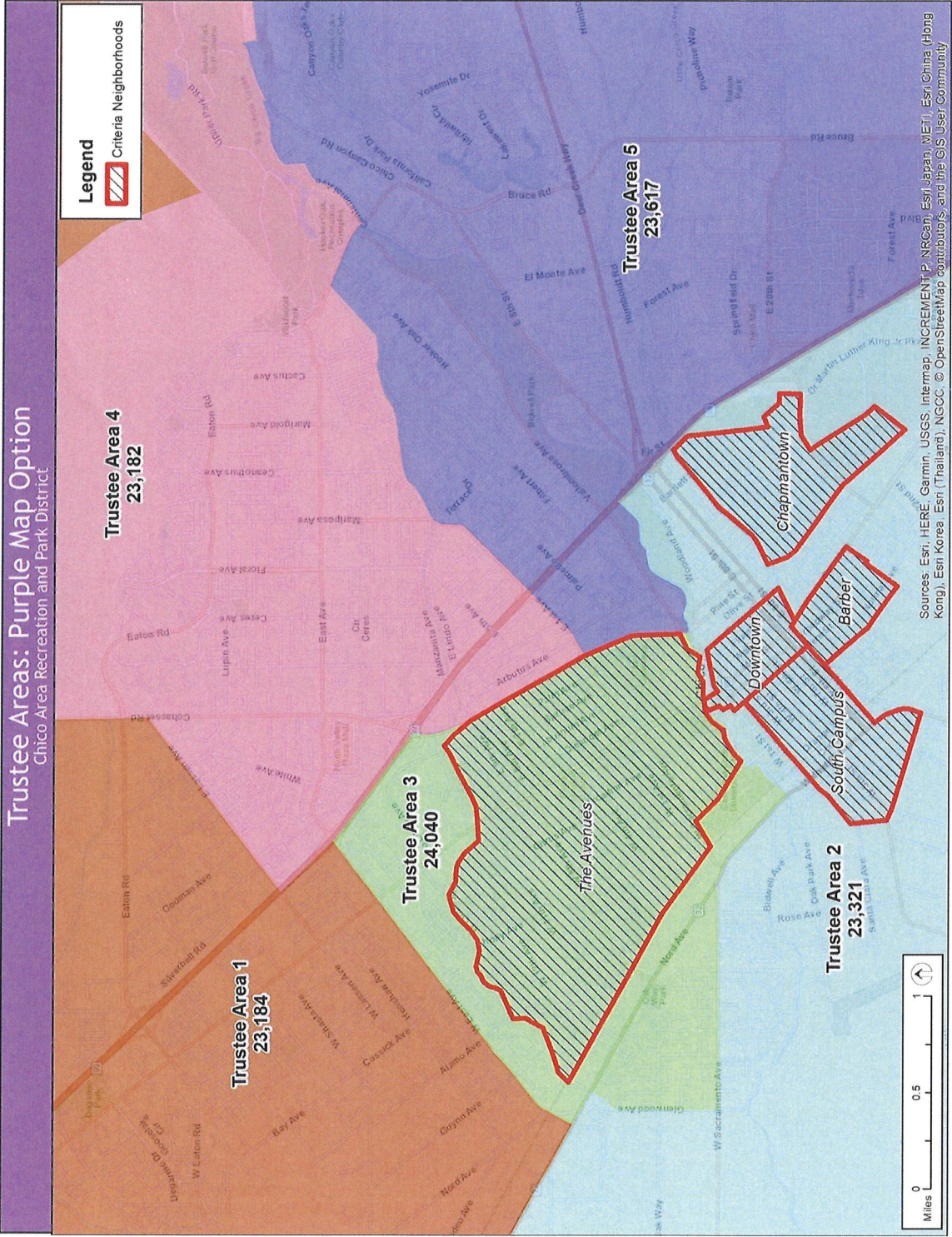
## Voting Age Population

Area	18+ Population	% Hispanic	% White
1	17,966	15.4%	73.3%
2	19,495	20.9%	65.8%
3	20,261	23.3%	62.9%
4	18,162	14.9%	71.9%
5	18,770	13.7%	74.1%
<b>Total</b>	<b>94,654</b>	<b>17.8%</b>	<b>69.4%</b>

% Asian	% Black	% All Other	% 2+ Races
3.5%	1.1%	1.5%	5.1%
3.5%	2.0%	2.2%	5.6%
4.6%	2.3%	1.4%	5.5%
4.4%	1.5%	1.9%	5.4%
4.3%	1.4%	1.4%	5.0%
4.1%	1.7%	1.7%	5.3%





### Total Population

Area	Total Population	% Hispanic	% White
1	23,184	18.0%	69.9%
2	23,321	22.9%	63.0%
3	24,040	24.4%	61.0%
4	23,182	17.3%	68.3%
5	23,617	15.5%	71.2%
<b>Total</b>	<b>117,344</b>	<b>19.6%</b>	<b>66.6%</b>

%	Asian	Black	All Other	2+ Races
3.5%	1.2%	1.4%	6.0%	6.0%
3.5%	2.0%	2.4%	6.3%	6.3%
4.6%	2.4%	1.5%	6.2%	6.2%
4.6%	1.5%	1.9%	6.4%	6.4%
4.2%	1.4%	1.6%	6.2%	6.2%
4.1%	1.7%	1.8%	6.2%	6.2%

### Voting Age Population

Area	18+ Population	% Hispanic	% White
1	17,966	15.4%	73.3%
2	19,495	20.9%	65.8%
3	20,261	23.3%	62.9%
4	18,162	14.9%	71.9%
5	18,770	13.7%	74.1%
<b>Total</b>	<b>94,654</b>	<b>17.8%</b>	<b>69.4%</b>

%	Asian	Black	All Other	2+ Races
3.5%	1.1%	1.5%	5.1%	5.1%
3.5%	2.0%	2.2%	5.6%	5.6%
4.6%	2.3%	1.4%	5.5%	5.5%
4.4%	1.5%	1.9%	5.4%	5.4%
4.3%	1.4%	1.4%	5.0%	5.0%
4.1%	1.7%	1.7%	5.3%	5.3%



# Next Steps

# Proposed Timeline

DATE	ACTION
November 15, 2021	Public Outreach Meeting #1
December 2, 2021	Public Outreach Meeting #2
January 13, 2022	Presentation of Draft Trustee Area Maps
January 27, 2022	First Hearing on Draft Trustee Area Maps
February 10, 2022	Second Hearing on Draft Trustee Area Maps
February 24, 2022	Final map options presented to the Board for adoption



Chico Area Recreation and Park District “Helping People Play”

Staff Report 22-1  
Agenda Item 4.0

# STAFF REPORT

**DATE:** January 13, 2022  
**TO:** Board of Directors  
**FROM:** Annabel Grimm, General Manager  
**SUBJECT:** Masking/Testing for District Programs

## Discussion

In November 2021, Butte County Public Health (BCPH) released a statement declaring “wearing masks while playing indoor basketball could pose a choking hazard, as well as potential injuries, to [participants] during play.” BCPH waived the masking requirement but required weekly testing.

In late November, the California Department of Public Health (CDPH) revised its masking guidelines for extracurricular activities: “When actively practicing, conditioning, or competing in indoor sports, masks are required by participants even during heavy exertion, as practicable. If masks are not worn due to heavy exertion, it is strongly recommended that individuals undergo screening testing at least once weekly.”

The logistics and costs of managing testing for CARD’s participant base of 600+ could only be accomplished by becoming a state-sponsored testing site. CDPH is providing all testing materials as well as the software required for tracking, reporting, and compliance. The web-based platform allows participants to pre-register, provide electronic consent forms, log test results, view case reports, and electronically share results with participants (or guardians).

Currently, CARD does not plan to accept external testing results due to resourcing constraints but can revisit the topic if undue hardships are reported.

By \_\_\_\_\_  
Annabel Grimm  
General Manager



Chico Area Recreation and Park District "Helping People Play"

Staff Report 22-2  
Agenda Item 5.0

# STAFF REPORT

**DATE:** January 13, 2022  
**TO:** Board of Directors  
**FROM:** Scott Schumann, Parks and Facilities Manager  
**SUBJECT:** Pleasant Valley Pool Maintenance Project

## Discussion

Staff completed the formal bid process for the PV pool repairs and maintenance approved in the 2021/2022 capital improvement budget. The lowest and most qualified base bid came in at \$64,994 for the boiler, lighting, drain replacement which exceeded the approved allocation of \$55,000.

During the bid walk, the bidders recognized several deferred maintenance issues that would impact the feasibility of the original scope of the project. Two bids were received on January 6, 2022, that encompassed the additional scope.

1. Gate valve failure/replacement
2. Rusted, rotting lighting conduit below the pool deck which can only be replaced by cutting through the deck to replace conduit and supply power to lighting
3. Exfoliating, sharp-edged, stained pool shell/lining or resurfacing
  - a. Note: Due to the age and thinness of the pool shell an additional acid wash to address will result in further damage and require resurfacing to correct

## Recommendation

It is recommended that CARD proceed with the Pleasant Valley pool maintenance project and request the Board of Directors approve the following increased scope and budget:

- Increase funds for original scope \$10,000 (total of \$65,000)  
(boiler, lights, drains)
- Additional scope \$460,000
- Total project value \$525,000

By \_\_\_\_\_  
Scott Schumann  
Parks and Facilities Manager